



CARBON PROJECT SHOWCASE: FORESTRY

Hobart, Tasmania

18-20 March 2026

CARBON PROJECT SHOWCASE

Join carbon project developers and landholders on a site visit and see how these projects are contributing to achieve Australia's climate goals. Hear directly from carbon farmers and landholders about the economic opportunities these projects can bring.

FIRST STOP: HOBART, TASMANIA

The Tasmanian Carbon Project Showcase is the first in a series of site visits throughout 2026 and focuses on forestry carbon projects, hosted by SFM.

Price: AUS \$2,500 ex GST

Inclusions

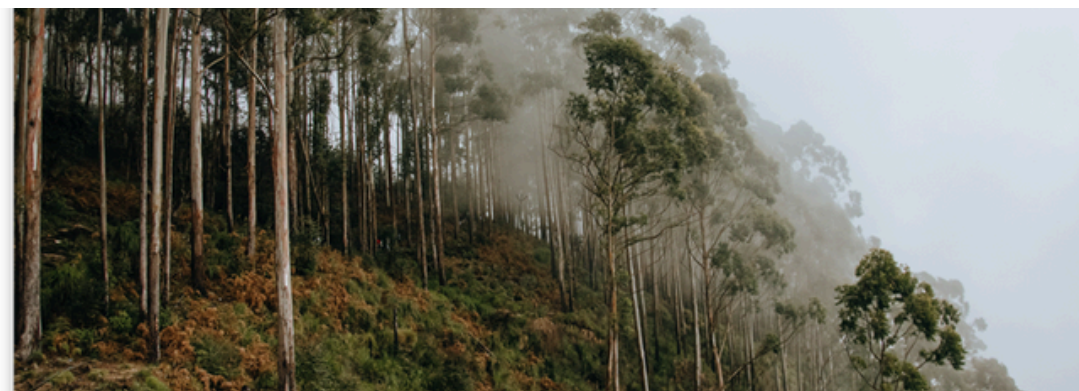
- Site visits and expert commentary
- Bus transfer
- Site access and National Park fees
- All meals and drinks (some restrictions on alcohol apply)
- MONA excursion on third day: ferry and entry fees

Additional (to be covered by attendee)

- Flights and transfers
- Accommodation and breakfast



[CLICK HERE TO REGISTER](#)



DAY ONE

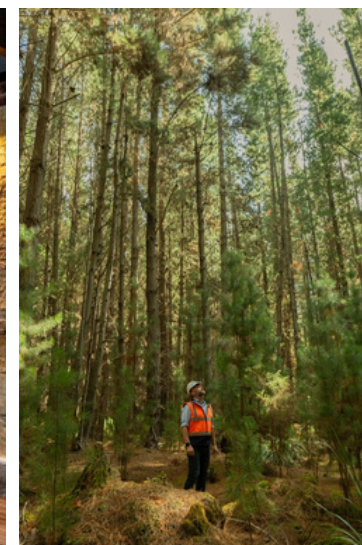
Wednesday, 18 March 2026

- First bus pick-up from Hobart waterfront at 11.30am (program starts)
- Welcome lunch at [Frogmore Creek Winery](#).
- [Walters/Woodsdale](#) site visit

SFM established a cluster of nine new plantation projects in Tasmania's Woodsdale region, with three initiated in 2024 and six added in 2025. Eight of these projects are already registered with the Clean Energy Regulator, and the ninth is on track for registration in 2026.

Located within a 20-kilometre radius, the projects deliver significant operational and economic efficiencies, including streamlined contractor management, consistent wood supply, shared fire management resources, reduced road infrastructure costs, and broader benefit-sharing among local landholders and neighbouring properties.

- Dinner at [Peppina](#) (hosted by Clima)



DAY TWO

Thursday, 19 March 2026

- Transport to the Derwent Valley
- Hurburgh site visit

Hurburgh is a freehold property near Ouse, which is part of New Forests' ActivAcre program, managed by SFM, which was previously a grazing property. SFM staff are on location to speak about the history of the property and the conversion to plantation.

- Meadowbank Wines site visit and lunch

Meadowbank Wines is owned by the Ellis family who are participating in the ActivAcre program, a New Forests initiative managed on the ground by SFM. This lunch provides an opportunity for attendees to ask questions of landowners and understand what participation in a carbon forestry program looks like.

- Westerway site visit

Westerway is a third rotation pine plantation managed by SFM. Attendees will be able to discuss the plantation process and permanence with one of SFM's silvicultural specialist foresters.

- Russell Falls visit
- Dinner at Mures Upper Deck



DAY THREE

Friday, 20 March 2026

- Ferry to MONA
- Explore [MONA](#)
- Lunch at [The Source](#)
- Return ferry back to Hobart and end of program (3.30pm)



Want to host a project showcase?

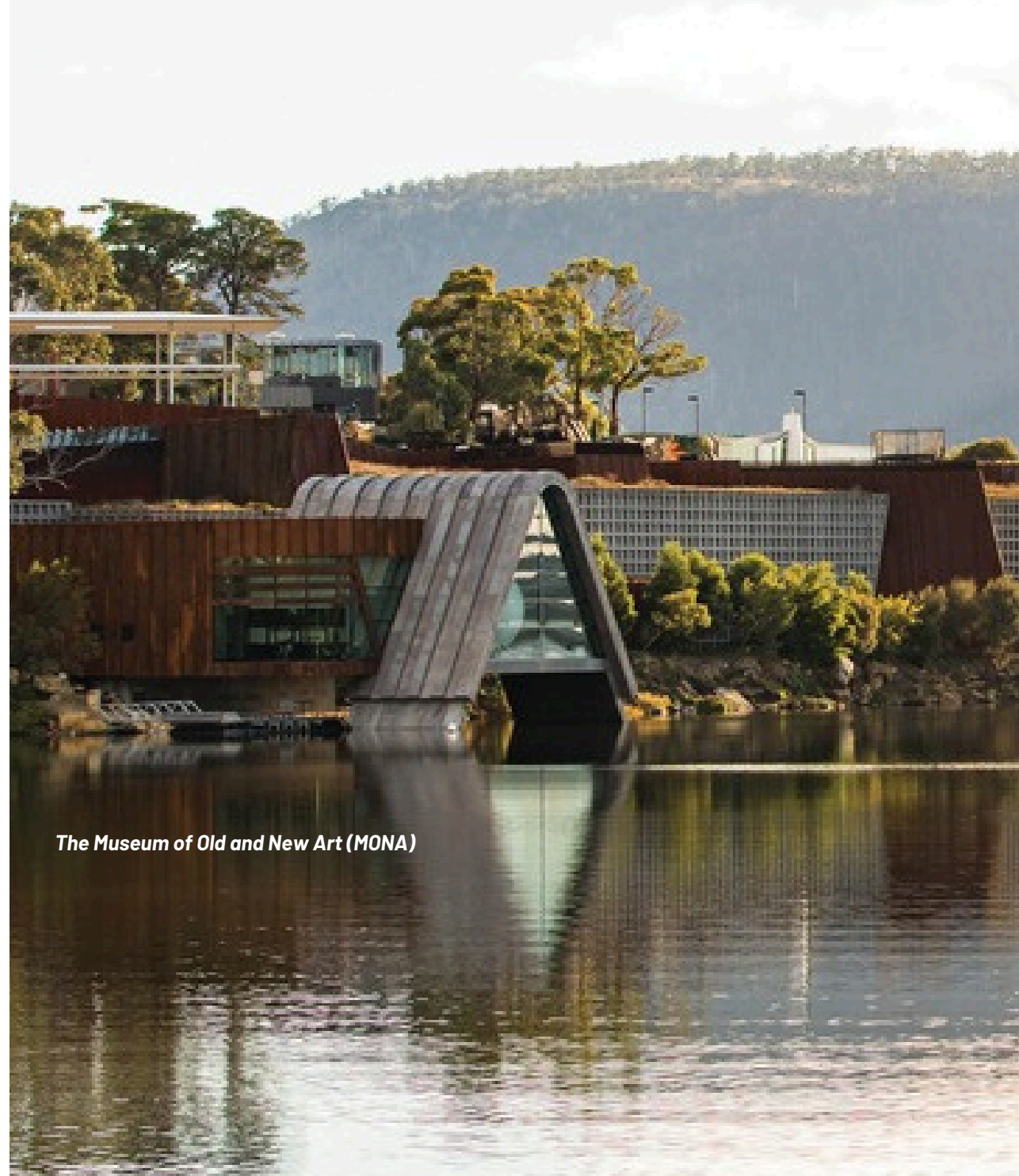
Contact

Claire Reid

Events & Membership Director

E | claire.reid@carbonmarketinstitute.org

P | +61 400 876 494



The Museum of Old and New Art (MONA)